

Scheme Overview

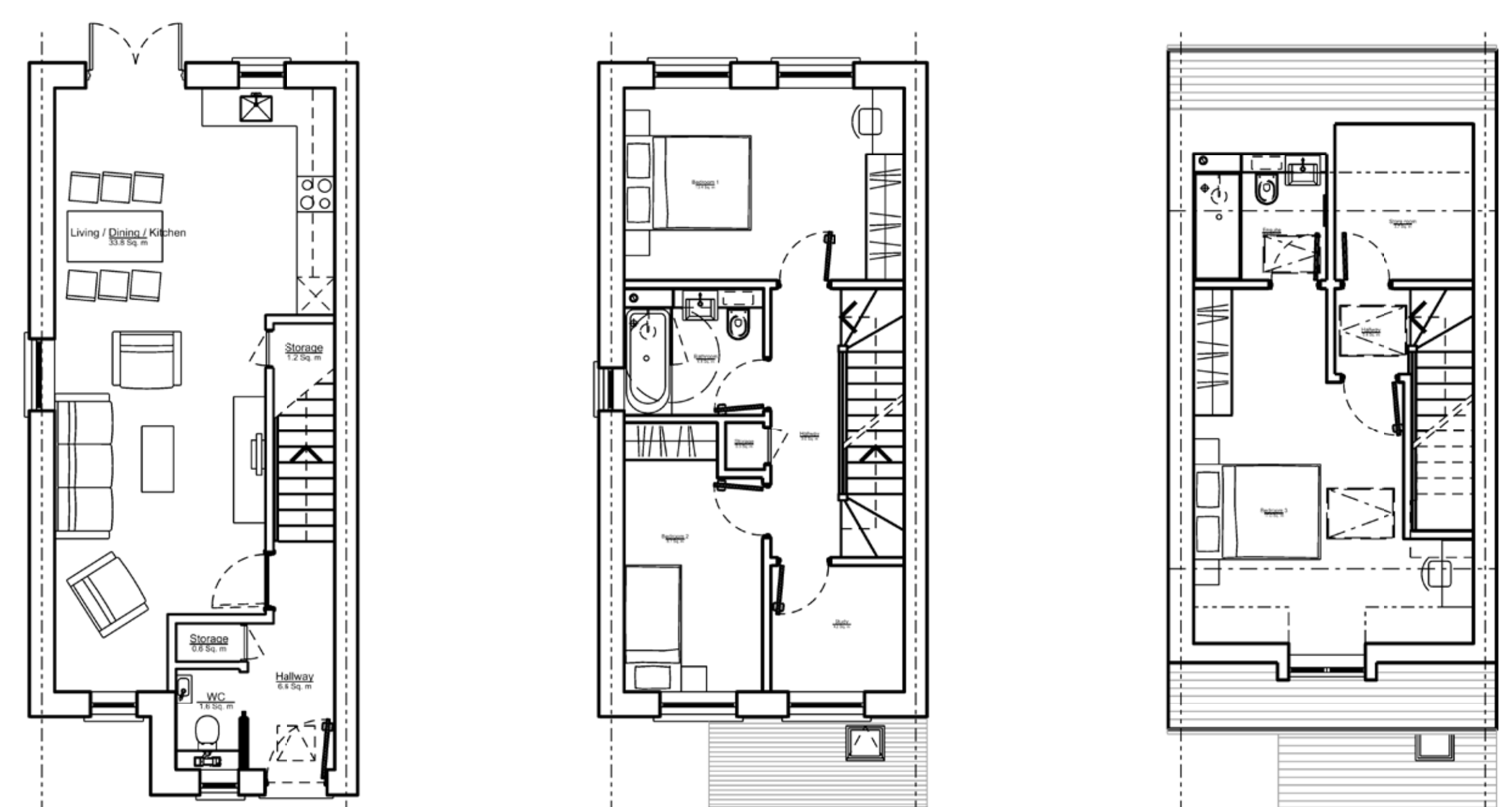


A Computer Generated Image of the Proposed Semi-Detached Houses



A Computer Generated Image Showing The New Access From Baring Road

The proposal is for the demolition of 367 Baring Road and the creation of an access road to serve a sympathetically designed housing scheme. Landscaping will be carefully considered in order to ensure an attractive environment and create a sense of space, not only for the occupiers of the development, but also for those who bound the site.



Typical Floor Plans



Site Layout Plan